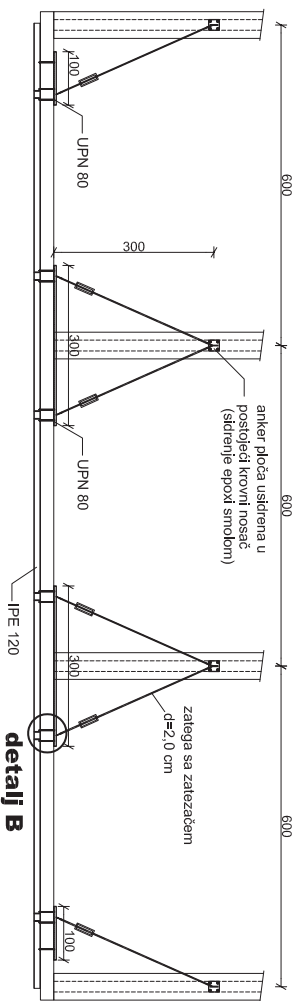


7. GRAFIČKI PRILOZI

1.	- PROČELJE	1:100
2.	- DNO STUPA, DETALJ 'D'	1:10

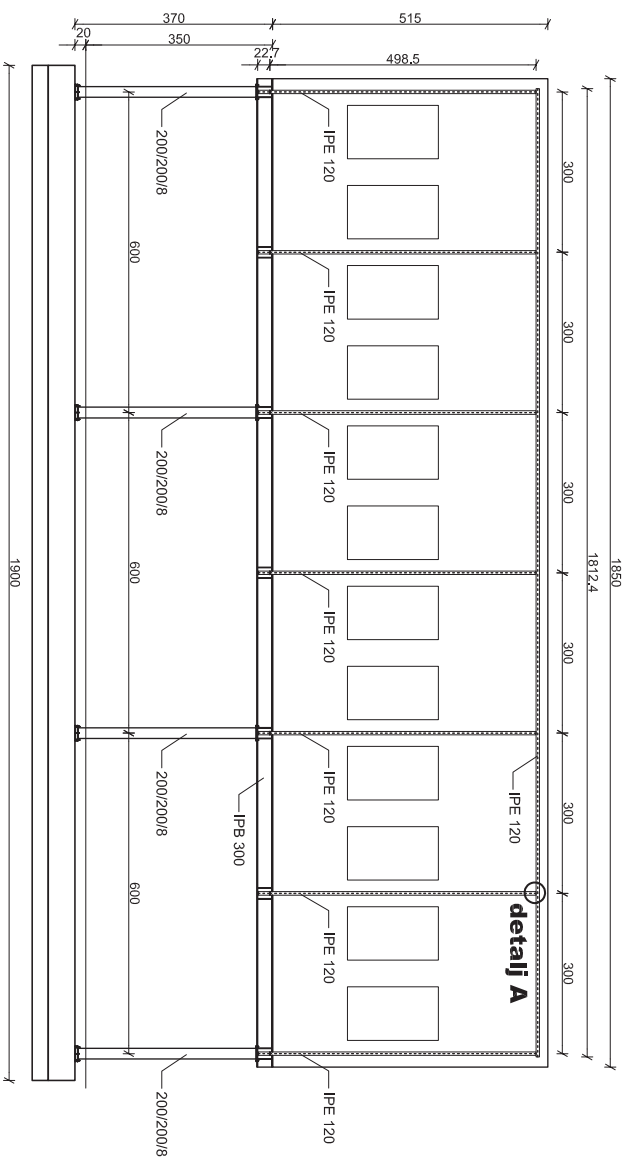
TLOCRT KROVIŠTA



detalj B

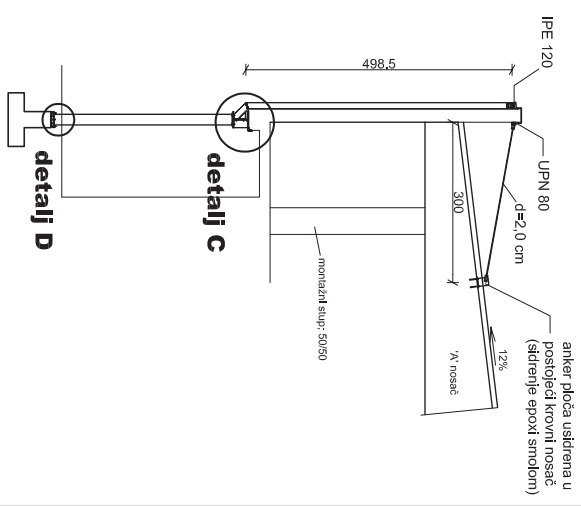
beton: C25/30
armatura: B500B
klasa izloženosti: XC2
zaštitni sloji: 3 cm
čeliki: S235
višci čvrstoće: 8,8
zavari klase: B

PROSEKJE



detalj A

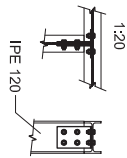
PRESJEK



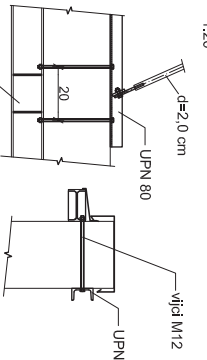
detalj C

detalj D

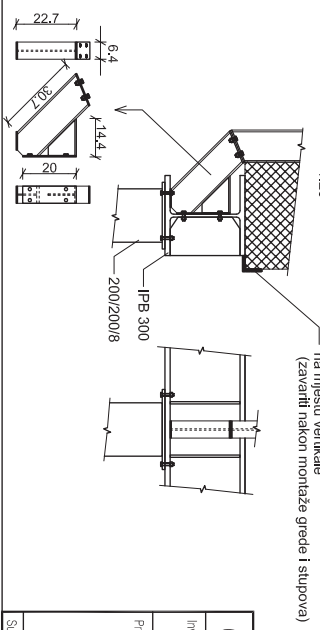
detalj A



detalj B



detalj C



EXPERT d. o. o.

Investitor: Autocesta Rijeka – Zagreb d.d.
 Sirolna 4, Zagreb

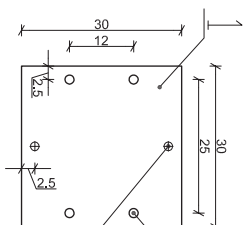
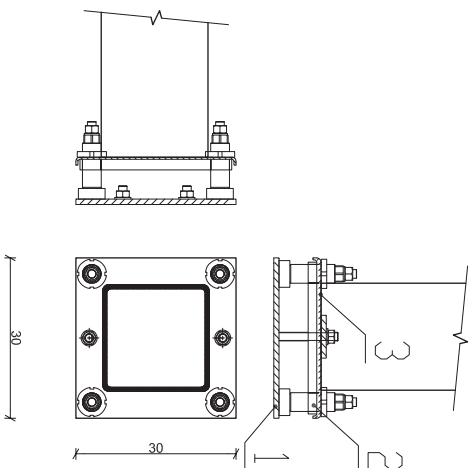
Projektant: Marcel Puljko, mag.ing.aed.†
 HRVATSKA KOMORA INŽENJERA GRAĐEVINARSTVA
 Marcel Puljko
 mag.ing.aed.†
 Ovlaštenje inženjera
 G 4516

Graditelj: SAMOČIJA COOP-a RUPA (Oblikt A, uranava i radionica)
 Dioničar Rupa: MAUJIJE, K.č.p.: 3755, k.o. Lipa

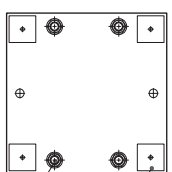
Izradak: GLAVNI PROJEKT – GRAĐEVINSKI PROJEKT KONSTRUKCIJE
 Označka: GLP-G-56/2016 (zop: 56/2016) Datum: studeni 2016.

Sadržaj: PROJEKCIJE
 Mjerilo: 1:100
 List: 1

1. 300/300/20 mm
2. 300/300/20 mm
3. 300/300/8 mm

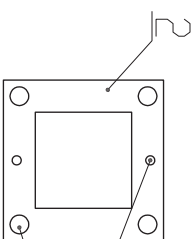


rupa $\text{\O}17$ mm
za anker šipke (M16)
navojna šipka M16
 $l = 150$ mm



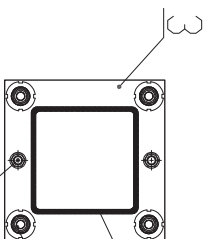
podloška; 50/50/20 mm

podloška i matica M16



rupa $\text{\O}17$ mm

rupa $\text{\O}35$ mm



stup; 200/200/8 mm

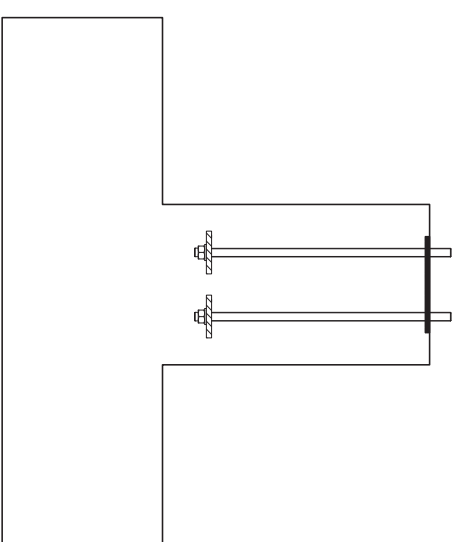
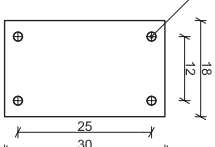
vijak za podešavanje M35

podloška i matica M16

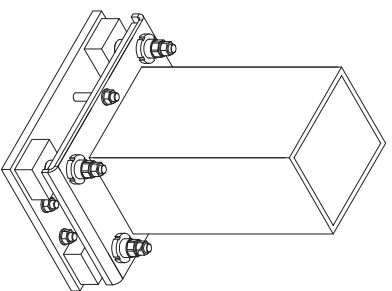
ugradnja u temelj

anker šipke (M16)

$l = 450$ mm



aksometrijski prikaz;
skica



EXPERT d. o. o.

Trg dr. Franje Tuđmana 15/1/1, Našice, tel/fax +385 (31) 638-271/275

Investitor: Autocesta Rijeka – Zagreb d.d.

Siročina 4, Zagreb

Projektant: Marcel Puijko, mag.ing.aedif.

HRVATSKA KOMORA INŽENJERA GRAĐEVINARSTVA

Marcel Puijko

mag.ing.aedif.

Ovlaštenik izdavanja

G 4516

Gradovnik: SAMACIJA COOP-a RUPA (Objekt A, unava i radionica)

Dionica Rupa – Maujić, k.č.br. 3755, k.o. Lipa

Izradak: GLAVNI PROJEKT – GRAĐEVINSKI PROJEKT KONSTRUKCIJE

Oznaka: GLP-G-56/2016 (zop. 56/2016) Datum: studen 2016.

Sadržaj: DNO STUPA: DETALJ D

Merilo: 1:10

Lst: 2

Stranica: